



LOYTON

SPORTING



Welcome to
LOYTON SPORTING

The most prestigious
shooting portfolio in the
United Kingdom.

Exmoor England



*“ Loyton is proud to represent six of the
finest shoots in the United Kingdom;
set in the most fabulous countryside we
are lucky to call this our daily commute.
Excellence and wonder combined.
We cannot wait to share this with you. ”*

ANGUS BARNES - FOUNDER



OUR PORTFOLIO OF INTERNATIONALLY
RECOGNISED GAME SHOOTS
IN THE SOUTH WEST OF ENGLAND

THE BARNES FAMILY HAVE BEEN
ENTERTAINING ON THE LOYTON ESTATE
FOR OVER 50 YEARS

We would be delighted to welcome you to Loyton and experience our wonderful shooting and hospitality.

Loyton Sporting was established by Angus Barnes in 2003 when he returned from his career as an auctioneer at Bonhams in London. Today, Loyton is extremely proud to manage a portfolio of six sporting clubs on six of the finest shooting estates, in and around the Exmoor National Park in the South West of England.

Each estate has a distinctive, individual character, yet all share our personal philosophy, which is to maintain the highest standards with a great emphasis on the enjoyment of the days, the presentation of the birds and fabulous hospitality.

Angus and his family also established Loyton Lodge, a ten bedroom shooting lodge known for its exceptional hospitality. Additional properties, Morebath Manor, Molland House and Bittescombe Lodge are also available for exclusive use for our teams.

We are immensely proud to present Loyton to you.

Exmoor England



THE CHALLACOMBE
SHOOT



THE COMBE SYDENHAM
SHOOT



THE HADDEO
SHOOT



THE MILTONS
SHOOT



THE MOLLAND
SHOOT



THE STUCKERIDGE
SHOOT

LOYTON
SPORTING



- Travel / flights / transfer
- Accommodation / local / London
- Gun hire / storage / courier service
- Instruction / loader / tuition
- Clothing / purchase / storage
- Visitors shotgun permits / insurance
- Cartridges / purchase / storage
- Photography / video / personalised books
- Wellness / private chefs

THE FINEST SHOOTING EXPERIENCES
TAILORED TO YOU

Your Loyton concierge team will curate every aspect of your trip to cover all your shooting, travel and accommodation requirements.

Creating an unforgettable experience, we will tailor your day to ensure that you and your guests enjoy one of the finest sporting experiences. Our mantra is to create fun and long-lasting memories.

When you arrive at Loyton, your personal host will ensure your shoot days run seamlessly and are filled with the most fulfilling sport. The experience will include, but is not limited to, outstanding shooting, amazing food and wine, sumptuous accommodation, and not least our world renowned mobile Land Rover bars. All within an incredible landscape and surrounded by exceptional people.

Everything is bespoke to you and your personal requirements from travel and clothing to gun storage, gun hire and cartridges and fine wine curation. Bag sizes are flexible to suit the individuals budget and each trip will be managed according to the requirements of the individual or team.

The Loyton concierge team comprises highly experienced hosts, gamekeepers and administrative department, they are here to discuss all your requirements, however big or small.

Exmoor England

*“ A truly memorable experience,
the sport was exceptional and the
hospitality was first class. ”*

A.J. - HOUSTON, TEXAS



LOYTON
SPORTING



Wake up call / breakfast.
Team talk / safety briefing.
Peg draw / loader introduction.
Depart for first drive (shoot) of the day.
Post drive coffee and refreshments.
Second drive of the day.
Elevenses (traditional mid-morning treat) .
Third drive of the day.
Lunch served in the shoot lodge.
Last drive of the day.
Tea / rest.
Cocktails / dinner.

TYPICAL SHOOTING VISIT

Typically, you will arrive the night before your shoot day, if flying or arriving at Loyton by train, you will be collected by our concierge driver, or you may well choose to drive yourself.

On arrival, you will be greeted by the House Manager, who will show you to your room, your guns and equipment will be locked away in the gun room and you will be offered a welcoming drink before a brief guided tour around the lodge facilities.

The evening will then start in earnest, with cocktails and canapés served by the lodge staff before heading to the dining room for a delicious dinner, cooked by our excellent in-house chefs and served with accompanying fine wines. After dinner more cocktails and fun in the drawing room or billiard rooms, around a roaring fire, in preparation for the following day.

After a blissful night's sleep, a full breakfast is served in the lodge before being led to your chosen shoot by your Loyton host,

Once at the shoot you will be enjoying indulgent hospitality in between the amazing shooting, provided by our friendly team of shoot staff. Throughout the day you will receive the very best food and drink served in the shoot lodge and from our famous Land Rover bars.

For those staying for a few days, you will be escorted back to the lodge (perhaps via one of the many local pubs) where you can enjoy tea and relax in time for the next evenings dinner party, before we do it all over again.

Exmoor England

LOYTON

SPORTING



SHOOTING PACKAGES

Membership of the sporting clubs will give you access to all of the shoots in our portfolio and also for the first time, we are also able to offer you sporting opportunities overseas.

At Loyton we can offer mixed days throughout the season from the 1st September through to the 31st January. These will include, but not limited to, full driven days; smaller boundary days; and individual pegs on our members' days.

All these packages can be managed to prescribed budgets and aspirations, whether these are one-off visits, multi-day tours or repeat bookings.

THE LOYTON GRAND TOUR

For those wishing to experience every shoot in one visit, we would be thrilled to curate a trip that includes all six sporting estates within one week.


For membership & booking enquiries, please contact Loyton on +44 (0) 1398 331 174 or sporting@loyton.com



Exmoor England



The Loyton Grand Tour
Full driven days 250 - 500+ birds
Smaller driven days 100 - 200 birds
Boundary days 50 - 100 birds
Individual members pegs
Directors days



*“ If Challacombe is a model
for the driven shoots of the next
decade, the future is exciting. ”*

JANET MENZIES, THE FIELD

BRAY VALLEY
SPORTING CLUB



THE CHALLACOMBE SHOOT



Availability from September 1st
to January 31st.

Partridge and pheasant.

Located just 25 miles from Loyton.

As many as 18 different drives.

Centrally located estate lodge.

Shooting for all standards from
novice to professional.

One of the finest partridge shoots in the United Kingdom, Challacombe is situated in the heart of the Exmoor countryside and offers a great mix of testing drives. Its astonishing landscape sets an enduring precedent and brings a very special atmosphere to this impressive and convivial shoot.

Coveys of partridge and pheasant are flushed out to spectacular effect and these high birds are a pleasure to watch and a test to bring down. Guns find themselves in a mixture of surroundings from moorland edge and pasture, to wooded valleys. The views throughout the day are impressive for even the seasoned Exmoor visitor.


Set in a pure Exmoor landscape, the heart of the shoot is the reservoir, over which the birds are driven to astounding effect, offering dogs a veritable retrieving challenge. A wonderful spectacle for guns, dog handlers and onlookers alike.

The Challacombe Shoot continues to evolve, with some fantastic new drives, one of which is almost too difficult!

SHOOTING AT BRAY VALLEY SPORTING CLUB

For membership & booking enquiries, please contact Loyton
on +44 (0) 1398 331 174 or sporting@loyton.com

Exmoor England



*“Combe Sydenham offers the
perfect high pheasant day.”*

SHOOTING GAZETTE

COMBE SYDENHAM
SPORTING CLUB



THE COMBE SYDENHAM SHOOT

A truly astonishing pheasant shoot, Combe Sydenham is set in a woodland landscape within the boundaries of an historic estate and offers a traditional family atmosphere delivering the highest quality shooting.

A firmly established shoot, Combe Sydenham was once home to Sir Francis Drake, famed sea captain but also skilled water engineer and a series of leats and ponds at the centre of the shoot are testament to his designs for water supply.

Drives here provide consistent, technically difficult pheasants from testing terrain, with every drive subtly different- contributing to Combe Sydenham's popularity. Part of the beauty is the combination of scenery and the complimenting woodland.

You can expect a steady stream of challenging birds, both partridge and pheasant to test your prowess. A technical shoot that earns its reputation as one of the best shoots on Exmoor.



Availability from October 1st
to January 31st.

Partridge and pheasant.

Located just 15 miles from Loyton.

As many as 16 different drives.

Centrally located estate lodge.

Shooting for all standards from
novice to professional.

SHOOTING AT COMBE SYDENHAM SPORTING CLUB

For membership & booking enquiries, please contact Loyton
on +44 (0) 1398 331 174 or sporting@loyton.com

Exmoor England

*“ Miltons is an annual nominee for
one of the top twenty UK shoots. ”*





THE MILTONS SHOOT



One of the very top mixed shoots in the United Kingdom and one of the oldest shoots on Exmoor, Miltons offers 6000 acres of high bird drives around the Exe Valley.

Miltons was developed by Alan Milton and Brian Mitchell nearly 50 years ago and has remained at the pinnacle of the high bird shooting world ever since.

The shoot sits in wonderful topography along the Exe Valley producing amazing birds from early September until the end of the season, a vast selection of challenging drives of supreme quality, with a mix of partridge and pheasant, this shoot has something for everyone.

Like most of the other shoots in the portfolio, Miltons remains firmly on everyone's bucket list. As one of the first professional shoots in the United Kingdom this continues to thrive and develop.

Availability from September 1st to January 31st.

Partridge and pheasant.

Located just 8 miles from Loyton.

As many as 16 different drives.

Centrally located estate lodge.

Shooting for all standards from novice to professional.

SHOOTING AT MILTONS SPORTING CLUB

For membership & booking enquiries, please contact Loyton on +44 (0) 1398 331 174 or sporting@loyton.com

Exmoor England

“ Haddeo - the single greatest pheasant drive of my life. ”

FIELDSPORTS MAGAZINE





THE HADDEO SHOOT



Often regarded as the finest high pheasant shoot in the United Kingdom, Haddeo was brought to fame by the legendary Sir Edward (Ned) Goschen in the days when it was shot as 'Pixton' and for many years has been cited as an epitome of global shooting.

With 6,000 acres, the ground offers an outstanding spectrum of high-bird drives situated around the magnificent Exe Valley.

Covering some truly beautiful terrain, many of the drives are set along the Haddeo River and the Exe with a ford crossing at the old village of Bury - a setting both spectacular and daunting.

Famous drives such as St Paul's present a 'leisurely' flow of incredibly high, soaring birds seen way over the treetops. A truly unforgettable sight for spectator and sportsman alike.

Availability from October 1st to January 31st.

Partridge and pheasant.

Located just 1 mile from Loyton.

As many as 16 different drives.

Centrally located estate lodge.

Shooting for all standards from novice to professional.

SHOOTING AT HADDEO SPORTING CLUB

For membership & booking enquiries, please contact Loyton on +44 (0) 1398 331 174 or sporting@loyton.com

Exmoor England



*“ Molland has long been
recognised as one of the premier
West Country shoots. ”*

SHOOTING UK

MOLLAND
SPORTING CLUB



THE MOLLAND SHOOT



Availability from September 1st
to January 31st.

Partridge and pheasant.

Located just 15 miles from Loyton.

As many as 18 different drives.

Centrally located estate lodge.

Shooting for all standards from
novice to professional.

One of the finest mixed shoots in the United Kingdom, Molland is a name well recognised both in the sporting press and by guns who travel from around the world to shoot in England and the West Country.

The shoot has always a significant international clientele and it has continued to develop over the years. Our plans for Molland continue to develop with both new and established drives becoming even more exciting.

The estate covers circa 6000 acres and has been in the Throckmorton family for over 800 years. The Throckmortons' long history in the area means they greatly value and encourage involvement of the local community when it comes to shoot management. Molland is located on the southern edge of Exmoor and well located to shoot in conjunction with our other shoots.

The incredibly pretty estate rolls off the edge of the moor, offering wonderful drives of challenging pheasant and partridge, with fantastic views.

No main roads or even a white line interrupts its beautiful landscape and valleys, which epitomise the ancient beauty of Exmoor.

SHOOTING AT MOLLAND SPORTING CLUB

For membership & booking enquiries, please contact Loyton
on +44 (0) 1398 331 174 or sporting@loyton.com

Exmoor England



“ Stuckeridge is a visually stunning setting for presenting sporting birds straight out of the top drawer. ”

SHOOTING GAZETTE

STUCKERIDGE
SPORTING CLUB



THE STUCKERIDGE SHOOT

A wonderful high pheasant shoot, in an extremely pretty Devonshire setting, Stuckeridge offers a rich, dynamic variety of high quality driven birds.

Steep woods of oak and douglas fir flank the Iron Mill stream that nearby joins the Exe and breaks are often held in the fishing hut by the tributary.

In this beautiful setting across an old iron bridge, come great sweeps of soaring birds of the sort one truly equates with Exmoor. On other drives such as Stuckeridge Wood the guns are lined up through the bottom of the valley and the pheasants fly high over the gun line.

Stuckeridge's atmosphere is enhanced by the team of old friends that make up the loading, picking up and beating teams.

This infectious enthusiasm and a fantastic all-round day will appeal to guns and their non-shooting guests alike.



Availability from October 1st to January 31st.

Partridge and pheasant.

Located just 5 miles from Loyton.

As many as 12 different drives.

Centrally located estate lodge.

Shooting for all standards from novice to professional.

SHOOTING AT STUCKERIDGE SPORTING CLUB

For membership & booking enquiries, please contact Loyton on +44 (0) 1398 331 174 or sporting@loyton.com

Exmoor England

LOYTON
SPORTING



EXCEPTIONAL FOOD, WINES
& HOSPITALITY



Hospitality forms an integral part of the Loyton offering. With four principle houses available to accommodate your shoot party, there is great choice and each shoot has its own bespoke shooting lodge to use as the base for all shoot day activities.

Exceptional food and wine is also part of the Loyton experience with our wonderful private chefs providing amazing locally sourced produce. Your chef will be involved in the creation of your tailored menu and our in-house sommelier will make suggestions for suitable wine pairings. In addition we are more than happy to store and serve your own wine.

Each shoot will cover off all your needs, from wellness facilities to in-house massage treatments and bespoke dietary requirements.

The detail surrounding the whole shooting experience is so important to us and we were regarding as ground breaking in its delivery. Shooting is as much about the theatre as it is the sport and we aim to deliver exceptional service and a truly memorable experience throughout your entire visit.

- Fine dining
- Comprehensive cellars
- Games room / cigar room
- Wellness facilities
- Drying / laundry service

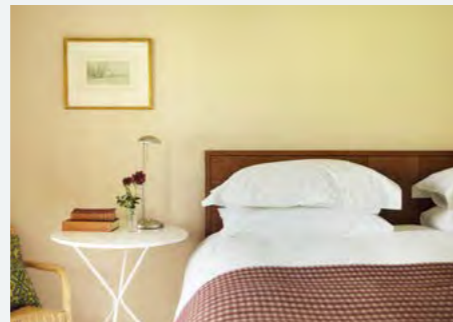
Exmoor England



*“ Loyton Lodge, one of the finest
shoot accommodations in the whole
of the UK and at the heart of this
slick sporting operation. ”*

SHOOTING GAZETTE

LOYTON
SPORTING



Sleeps 30 in total.
10 en-suite double bedrooms.
5 additional safari lodges (on request).
Wellness facilities / gymnasium.
Billiard / media / cigar room.
Bar / wine cellar.
Dining hall seats up to 30 guests.
Heated bootroom / gun room.
Extensive grounds.



LOYTON LODGE

Loyton Lodge is a private country retreat, providing luxury accommodation for up to 20 guests in an intimate setting with a relaxed and hospitable atmosphere.

The interior blends a contemporary style with antique furnishings and is distinguished by an interesting collection of original paintings and objets d'art.

Food is a significant part of the Loyton experience and you can enjoy majestic dinners in the large dining room with mezzanine gallery, blazing log fire and space to seat 28, feasting-style, at one impressively long table. In the mornings, breakfast can be taken, and sore heads nursed, in the smaller, light-filled breakfast room, newspapers, magazines and delicious, aromatic coffee to hand.

We have a well-stocked bar to complement our love of hosting and festivities. Loyton also has a carefully chosen cellar offering a good selection of interesting new and old world wines to accompany your menus. Guests are encouraged to enjoy the billiard room after dinner, for snooker, cards or wild games of Freda!

BOOKING AT LOYTON LODGE

For accommodation enquiries, please contact Loyton
on +44 (0) 1398 331 174 or sporting@loyton.com

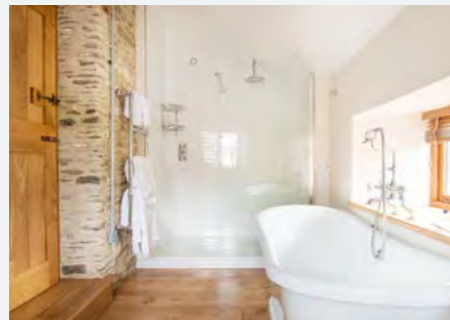
Exmoor England

*“ A sublime weekend in every way
and your hospitality at Molland
House is second to none. ”*





MOLLAND HOUSE



Molland House is a secluded Victorian farmhouse sitting on the edge of Exmoor in the finest West Country landscape.

Formerly known as Molland Manor, it has a rich history and has been well known as a shooting lodge for over 30 years. The house underwent a complete renovation in 2018 and is open during the winter shooting season in conjunction with Loyton Sporting.

The stone farmhouse sits on the edge of Molland village in Devon, the heart of an estate owned by the Throckmorton family for 800 years- traditional roots which have both inspired and complimented its renovation.


Molland House has plenty of living space and sleeps up to twenty people with additional staff accommodation. This all set in prettiest rolling countryside, tucked at the end of a private drive yet within easy reach of the dramatic Devonshire coastline and many other fantastic places to visit.

- Sleeps 20 in total.
- 10 en-suite double bedrooms.
- Wellness facilities (by arrangement).
- Media room / cigar room.
- Bar / wine cellar.
- Dining room for up to 20 guests.
- Heated bootroom / gun room.
- Extensive grounds.

BOOKING AT MOLLAND HOUSE

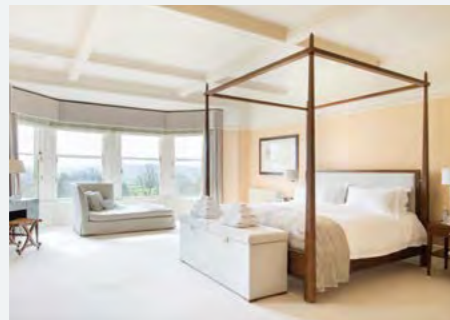
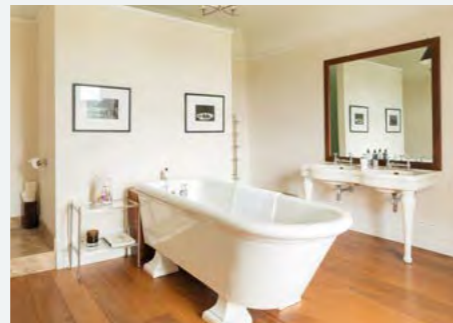
For accommodation enquiries, please contact Loyton on +44 (0) 1398 331 174 or sporting@loyton.com

Exmoor England



“ Morebath Manor is the most beautiful, peaceful place to stay and what a welcome. ”

LOYTON
SPORTING



Sleeps 24 in total.
9 en-suite double bedrooms.
3 en-suite double bedrooms (The Barn).
Wellness facilities / gym / tennis court.
Billiard / media room / cigar room.
Bar / wine cellar.
Dining room for up to 24 guests.
Heated bootroom / gun room.
Extensive grounds.



MOREBATH MANOR

Set in 21 acres of landscaped gardens and parkland, Morebath Manor is an impressive Grade II listed, nine-bedroom house located on the edge of Exmoor and dates back to the Domesday book.

Between 1892 and 1894 the house was rebuilt by Charles Digby Harrod, founder of the landmark Knightsbridge store Harrods, following his retirement in 1891.

Open during the winter shooting season in conjunction with Loyton Sporting the house is an eclectic mix of Victorian and Classical styles with some Art Nouveau detail. Recently the interiors have been updated to a more contemporary style whilst preserving many of the original charming Victorian features.

The fully equipped, open plan kitchen seats 10 comfortably and the dining room provides for larger numbers. It is the perfect setting for fabulous dinner parties. After dinner guests can migrate to the billiard room for coffee and petit fours at the bar.

BOOKING AT MOREBATH MANOR

For accommodation enquiries, please contact Loyton on +44 (0) 1398 331 174 or sporting@loyton.com

Exmoor England



“ Bittescombe Lodge is the epitome of secluded luxury and personalised service. ”

LOYTON
SPORTING



BITTESCOMBE LODGE AND DEER PARK



Bittescombe Lodge and Deer Park features ten architecturally unique en-suite bedrooms. Each a corner of absolute luxury. Each designed and built without compromise.

The living areas are spacious and elegant, yet intimate and comfortable. The Library, Sitting Room, Club and the Old Cowshed are home to a private art and rare book collection, full size snooker table, well-stocked bar, cinema screen, a collection of country house games, all to be enjoyed in deep velvet sofas, cosy reading corners, in front of warming log fires.

Bittescombe also boasts an indoor swimming pool, jacuzzi, sauna, gym, massage room and indoor padel and badminton courts.

Most of all Bittescombe prides itself on its outstanding levels of personalised service levels, where attention to detail and the guest experience is everything.

Sleeps 20 in total.
10 en-suite double bedrooms.
Wellness facilities / massage room.
Indoor swimming pool, jacuzzi, sauna.
Indoor gym / padel & badminton courts.
Billiard / cinema room / cigar room.
Bar / rare art library / wine cellar.
Dining hall seats up to 20 guests.
Heated bootroom / gun room.
Extensive grounds.

BOOKING AT BITTESCOMBE LODGE

For accommodation enquiries, please contact Loyton on +44 (0) 1398 331 174 or sporting@loyton.com

Exmoor England

*“ Loyton use their local knowledge
and understanding of what makes a good
day’s shooting to create tailor-made
experiences to meet every need of the
visiting guns. ”*

SHOOTING GAZETTE





Waterproof coats / hats / caps
Boots / socks / garters
Brecks / trousers / plus fours
Gillet / waistcoat/ tie
Ear defenders / eye protection / sunglasses
Walking / shopping / wellness

FREQUENT QUESTIONS

What should we wear?

At Loyton, you can choose your own formality, whether adopting traditional attire or a modern approach. You must feel comfortable in your surroundings.

For shoot days, we recommend a good quality waterproof coat and boots, however we can advise more specifically and provide options accordingly.

Is my non-shooting partner welcome,
and if so, what do they do?

Of course, everyone is welcome at Loyton, including your four-legged friends. If your partner does not want to join you on the shoot activities, we can curate a day in the area, to visit shops, galleries or restaurants.

Alternatively horse riding or walking tours can be arranged.

Likewise, we are also happy to take you along to the shoot during the day, if a lie in is required, following your wellness treatments.

Do we tip and who to?

Yes, this is part of the tradition and we suggest looking after the host staff, loaders, keepers, shoot day chefs and helpers.

Full details can be provided.

Exmoor England



“ We aim to deliver exceptional service and a truly memorable experience throughout your entire visit. ”

LOYTON

SPORTING



SHOOTING AT LOYTON

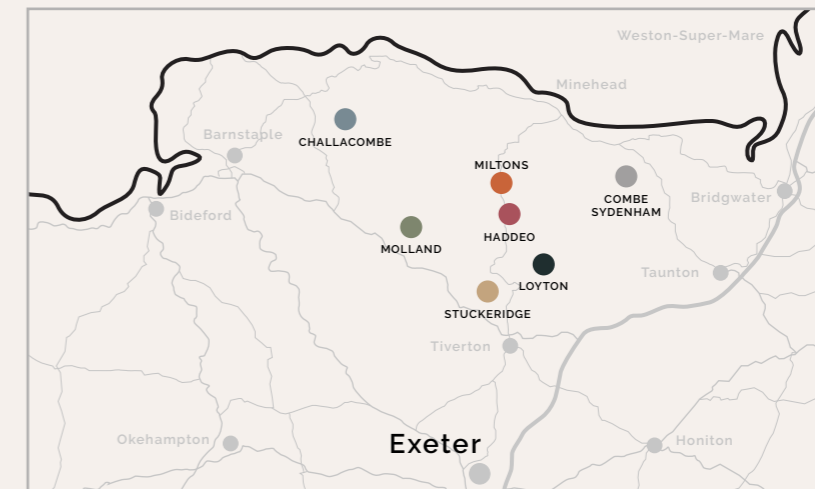
Loyton Sporting represents the most prestigious shooting portfolio in the South West of England.

By car, Loyton is a 3 hour drive from London, a 45 minute transfer from Bristol, or a 20 minute journey from the city of Exeter.

By train, there is a direct service from London Paddington to Tiverton Parkway, which takes just 2 hours.

Helicopter landing is arranged by appointment only, please contact us for permission and coordinates. A landing fee applies, which is donated to the Devon Air Ambulance.

By air, the closest airports to Loyton are Exeter and Bristol.



Exmoor England

*“ Loyton take their renowned
reputation for impeccable hospitality
to the rest of the world with their
international shooting packages. ”*





INTERNATIONAL SHOOTING

This year, for the first time, we are delighted to offer an exclusive collection of carefully curated international shooting opportunities in Europe, Asia & Africa.

We have experienced the standard of each estate first hand and subjected them to the same meticulous criteria that you would expect from Loyton.

We offer packages for groups and individuals, all tailored to your exacting preferences and operated on an 'all-inclusive' basis. Simply choose your trip and we will take care of every detail.

We will either travel with you or greet you at the airport, clear your weapons, and transport you to your accommodation. You can enjoy the sport and at the end we will return you to the local airport.



Some of the sporting options available.

Driven Boar (Turkey / Hungary).

Roe Calling (Hungary).

Driven Plains Game (South Africa).

Cape Buffalo (Africa).

Driven Grouse (UK).

Night Stalking for Tuskers (Turkey).

Driven Partridge (Spain).

Driven Big Game Monterias (Spain).

INTERNATIONAL SHOOTING AT LOYTON

For membership & booking enquiries, please contact Loyton on +44 (0) 1398 331 174 or sporting@loyton.com

Exmoor England



LOYTON SPORTING
REPRESENTING THE FINEST
SPORTING CLUBS

For membership and booking enquiries,
please contact Loyton on +44 (0) 1398 331 174
or sporting@loyton.com

loyton.com



Exmoor England



LOYTON SPORTING
REPRESENTING THE FINEST
SPORTING CLUBS

Exmoor *England*